



NedEye 80 NedEye 40

Next generation gimbal technology

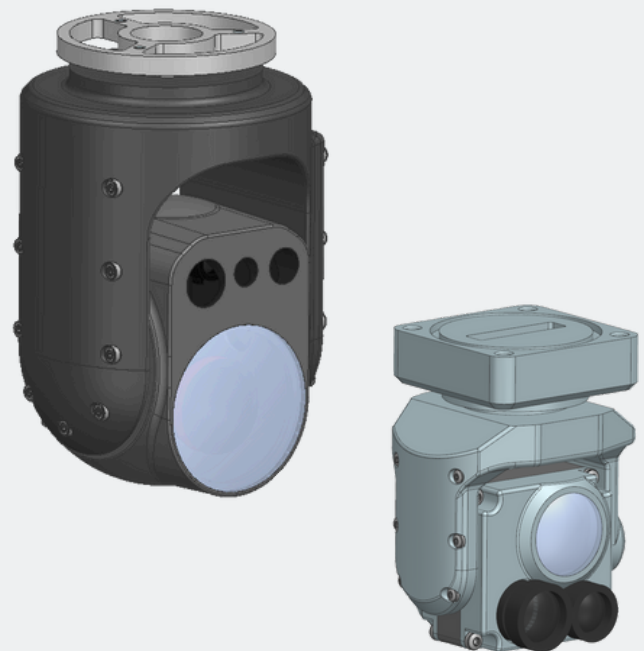


NedEye 80 & NedEye 40

NedEye is an advanced electro-optical/infrared stabilized gimbal, engineered for tactical drone-based observation. Designed for applications requiring ultra-lightweight performance, it integrates cutting-edge technology to deliver superior imaging and stabilization capabilities. Nedinsco's gimbal solutions are engineered for operational flexibility in the most demanding military environments.

Key features

- ✓ **Advanced stabilization:** Cutting-edge technology eliminates vibrations and motion blur, ensuring crystal-clear imaging during high-speed maneuvers.
- ✓ **Multi-sensor Integration:** Supports electro-optical (EO), thermal, infrared (IR), and laser sensors for 24/7 operational capability.
- ✓ **Compact, lightweight & ruggedized:** Designed for endurance, reducing payload weight while meeting stringent military durability standards.
- ✓ **Enhanced Continuous Zoom :** 80x optical and 40x digital continuous zoom enables seamless magnification for precise threat detection and reconnaissance, ensuring clear, long-distance surveillance.



TECHNICAL SPECIFICATIONS

Model	NedEye 80	NedEye40
Camera specifications		
Daylight camera	Visible 400 - 700 nm Resolution: 1280 x 720	
	Zoom: x40 + x2 digital (total x80) Continuous zoom	Zoom: x20 + x2 digital (total x 40) Continuous zoom
	HFOV: 1.5° - 60° (0.75° digital zoom)	HFOV: 3° - 60° (1.5° digital zoom)
Thermal camera	LWIR uncooled 8 - 14 nm	
	Resolution: 1280 x 720	Resolution: 640 x 480
	Zoom: x8 digital Continuous zoom	Zoom: x4 digital Continuous zoom
	HFOV: 2.5° - 20°	HFOV: 7.5° - 30°
Function & interface		
Gimbal function	Pan: 360° (non-continuous) Tilt: -45° to +135°	
	Stabilization level: <1mrad	
Control interface	RS-232 (MAVLink)	
Video interface	Micro-HDMI Ethernet (optional)	
Characteristics		
Dimensions	Diameter : 120 mm Height: 189 mm	Diameter: 66 mm Height: 86 mm
Weight	790 grams	290 grams
Power consumption	Typical 7 W	Typical 5 W
Power requirement	15-32 VDC	
Operating temperature	-20°C up to +55°C	

NedEye 80



NedEye 40

